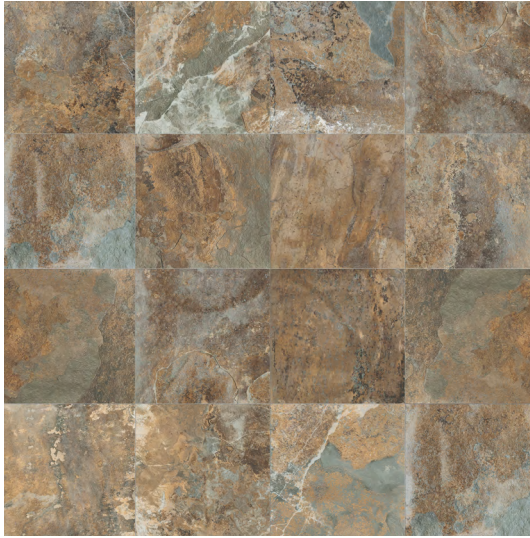


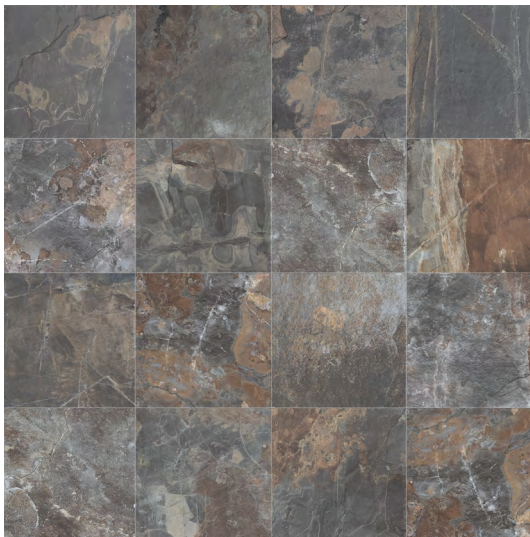
CENTURY
GEOLGY



Mars (CYGYMS)
(multicolor rust with grey tones)



Mineral (CYGYML)
(multicolor light grey)



Fossil (CYGYFL)
(multicolor dark grey with rust tones)

Inspired by nature, Geology is a porcelain recreation of slate in 3 colors with the wide shade variation that is characteristic of natural slate's strong personality. Intended for exterior use, the R11 Grip surface offers the perfect combination of beauty, dependability and safety for outdoor pavements. As a high-fire porcelain product, it provides technical advantages such as strength, a high resistance to temperature variations, and resistance to stains, solvents, and cleaning products. It comes in two modular sizes that can be used individually or combined together to create patterns.



SIZE	Grip Finish - Non-Rectified
10 x 20	CYGY--/1020
20 x 20	CYGY--/2020

Note: The Geology series comes only in grip finish (R11 A+B+C) for exterior use.

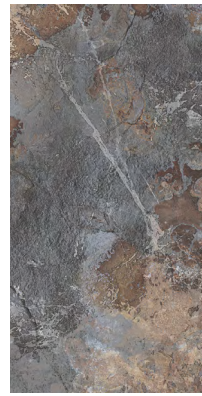
TRIM 3 x 20 Surface Bullnose CYGY--/SBN

The surface bullnose is made from field tile that is cut, ground and reglazed.

Colors are intended as a guide only and may vary from actual tile. Sizes listed are nominal. Please check samples before making final selection and to get actual dimensions for layout. See reverse side for additional product information.

Special Product: R11 2cm (3/4") Thick Paver

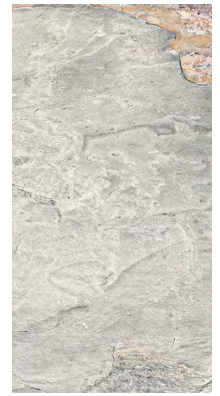
Non-Rectified - 20 x 40 (CYGY--/2040P)



Fossil
(CYGYFL)



Mars
(CYGYMS)



Mineral
(CYGYML)

The 20 x 40 Paver is suitable for most exterior paving applications including patios, pool decks, walkways, terraces, steps, and even most slopes. Of course, final suitability always comes down to the specific circumstances of the project, and proper cleaning and maintenance is required to maintain the slip resistance of any surface. Properly installed, 3/4" (2 cm) thick paver can be set on sand, gravel, grass or with a traditional thinset installation. The recommended minimum grout joint for the paver is 3/16".

INSTALLATION INFORMATION

Most Italian manufacturers recommend a maximum offset of 8" (20 cm) on all large format tiles when setting a running bond. Please refer to ANSI requirements for setting large format tiles, ANSI A 108.2 section 4.3.8. The minimum recommended grout joint is 3/32". Please note that the material is non-rectified. If using more than one size together, please check the caliber and be aware that you may have to adjust the size of the grout joint to make your pattern work.

Geology, with its R11 A+B+C Grip finish, is suitable for most exterior paving applications including patios, pool decks, walkways, terraces, steps, and even most slopes. Of course, final suitability always comes down to the specific circumstances of the project, and proper cleaning and maintenance is required to maintain the slip resistance of any surface. It is important to work with the layout, mixing pieces within each carton and pulling from several cartons, to insure a proper blend during installation.

Technical Information

Physical Properties	Norms	Value	Physical Properties	Norms	Value
Flexion Resistance	10545-4	Conforms	Slip Resistance	DIN 51130	R11 A+B+C
Water Absorption	10545-3	≤0.5% Conforms	Dynamic (DCOF) Coefficient of Friction	ANSI A326.3:2022 BOT300 E	≥ 0.42 Wet
Frost Resistance	10545-12	Resistant			

The Dynamic Coefficient of Friction is a general guide only. Testing may vary with different production runs and with different testing labs. As noted in the American with Disabilities Act (ADA) the coefficient of friction varies considerably due to facts not under the control of entities such as the manufacturers and distributors. These factors include, but are not limited to, contaminants, slope of terrain, drainage conditions, adjacent surfaces, etc. Suitability for any installation can only be determined by a site examination of all conditions that could affect the slip resistance of the tile being installed. Continual cleaning and maintenance must be performed once the tile has been installed.