



surface
care
solutions

Care & Maintenance Sheet

Amadis Nature

Tile Shop

Care & Maintenance Sheet

Amadis Nature – Crackle Tiles



surface
care
solutions

Care & Maintenance Sheet

Amadis Nature

Tile Shop



INITIAL NOTE

The following sheet is intended to provide useful information for the correct treatment of Amadis Nature by Tile Shop that will be installed as wall cladding. These guidelines aim to explain the methods of use and application of FILA products, as well as the tools required to carry out the treatment.

To maintain the surface in good condition over time, it is recommended to follow this protocol:

- Once the material has been installed, carry out the initial cleaning using CLEANER PRO diluted 1:30, leave to act for 4-5 minutes.
- When the material is clean and completely dry, apply MP90 ECO XTREME natural look penetrating sealer.
- Carry out routine maintenance using neutral cleaners such as CLEANALL SPRAY.
- Extraordinary maintenance should be performed using CLEANER PRO diluted 1:30.
- Don't use acid products and avoid contrasting cementitious grout.
- This type of glaze is somewhat delicate and may react negatively to acid products or aggressive cleaning agents. It is recommended to use neutral detergents for cleaning, both immediately after laying and for daily maintenance. It is important to avoid the use of anti-limescale products, as they may dull the surface and impair its appearance.

Always refer to the most up-to-date technical data sheets of the products before use.





surface care solutions

Care & Maintenance Sheet

Amadis Nature

Tile Shop

POST-INSTALLATION CLEANING

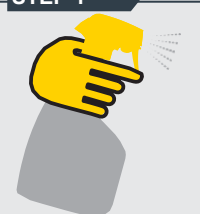
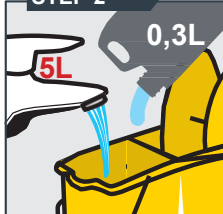
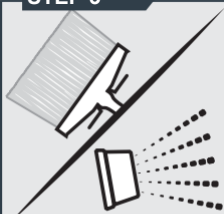

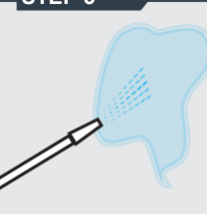
CLEANER PRO is recommended for this operation.

The product should be applied to remove surface residues. CLEANER PRO is used diluted 1:30. This product is a neutral cleaner that can be used both on floors and walls.

Coverage: when diluted 1:30, it covers up to 2,023 sq ft / 1 GAL



How to use it

<p>STEP 1</p> 	<p>STEP 2</p> 	<p>STEP 3</p> 	<p>STEP 4</p> 	<p>STEP 5</p> 
<p>Wet the surface with water.</p>	<p>Dilute CLEANER PRO 1:30</p>	<p>Distribute the solution on the surface with a brush or airless sprayer.</p>	<p>Let sit for 4-5 minutes, then clean the area with an abrasive Scotch Brite sponge or brush.</p>	<p>Remove residue and rinse with clean water.</p>

STAIN PROTECTION - Natural Look

MP90ECO XTREME is recommended for this operation.

Apply the product when the surface is clean and dry. The sealer reduces the absorption of water and non-acidic staining agents without changing the finishing. It does not protect against acids. Always read the technical data sheets before use.

Coverage: The product covers up to 1,500 sq ft / 1 GAL



How to use it

<p>STEP 1</p> 	<p>STEP 2</p> 	<p>STEP 3</p> 	<p>STEP 4</p> 
<p>Clean the surface well.</p>	<p>On a clean and dry surface, apply the product evenly with a brush</p>	<p>Wait 10 minutes, then remove any unabsorbed residue. The product must not form a film.</p>	<p>Do not touch the surface within the first 4 hours and do not wet the surface for 24 hours.</p>



surface
care
solutions

Care & Maintenance Sheet

Amadis Nature

Tile Shop

REGULAR MAINTENANCE

For this operation, we recommend using CLEANALL SPRAY

The product gently but effectively cleans all surfaces without damaging them. It is the ideal product for routine maintenance of surfaces.

How to use it



STEP 1
Spray the product on the surface keeping the bottle upright, 8-12 in from the point of application.



STEP 2
Clean the area with a soft cloth.

DEEP CLEANING

For this operation, we recommend CLEANER PRO.

The product removes stubborn dirt, restoring the wall's original appearance. It is recommended to carry out this cleaning when necessary. After two or three years, if necessary, reapply the treatment with MP90ECO XTREME after washing with CLEANER PRO.

Coverage: when diluted 1:30, it covers up to 2,023 sq ft / 1 GAL



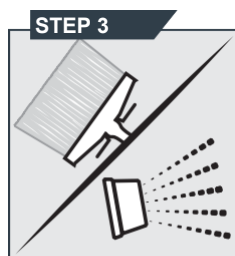
How to use it



STEP 1
Wet the surface with water.



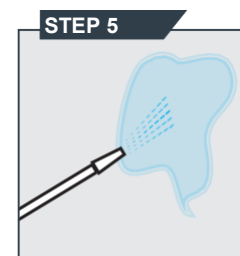
STEP 2
Dilute CLEANER PRO 1:30



STEP 3
Distribute the solution on the surface with a brush or airless sprayer.



STEP 4
Let sit for 4-5 minutes, then clean the area with an abrasive Scotch Brite sponge or brush.



STEP 5
Remove residue and rinse with clean water.



surface
care
solutions

Care & Maintenance Sheet

Amadis Nature

Tile Shop

STAIN CHART

OIL AND GREASE	NOSPOT
CARBONATED BEVERAGES AND JUICES	CLEANER PRO
URINE AND VOMIT	
COFFEE AND WINE	
BLOOD	
INK / MARKER	
NICOTINE	
HAIR DYE	
SILICONE	CLEANER PRO
POLYURETHANE FOAM	
ADHESIVE TAPE RESIDUE	
RESIN	
RUST	NORUST

NOTE

Avoid the use of acidic or alkaline substances, or solvent-based cleaning agents; regardless of their concentration and even if diluted, as they can damage the material.

This is a generic maintenance sheet.

For any enquiries, please write to info@filasolutions.com.